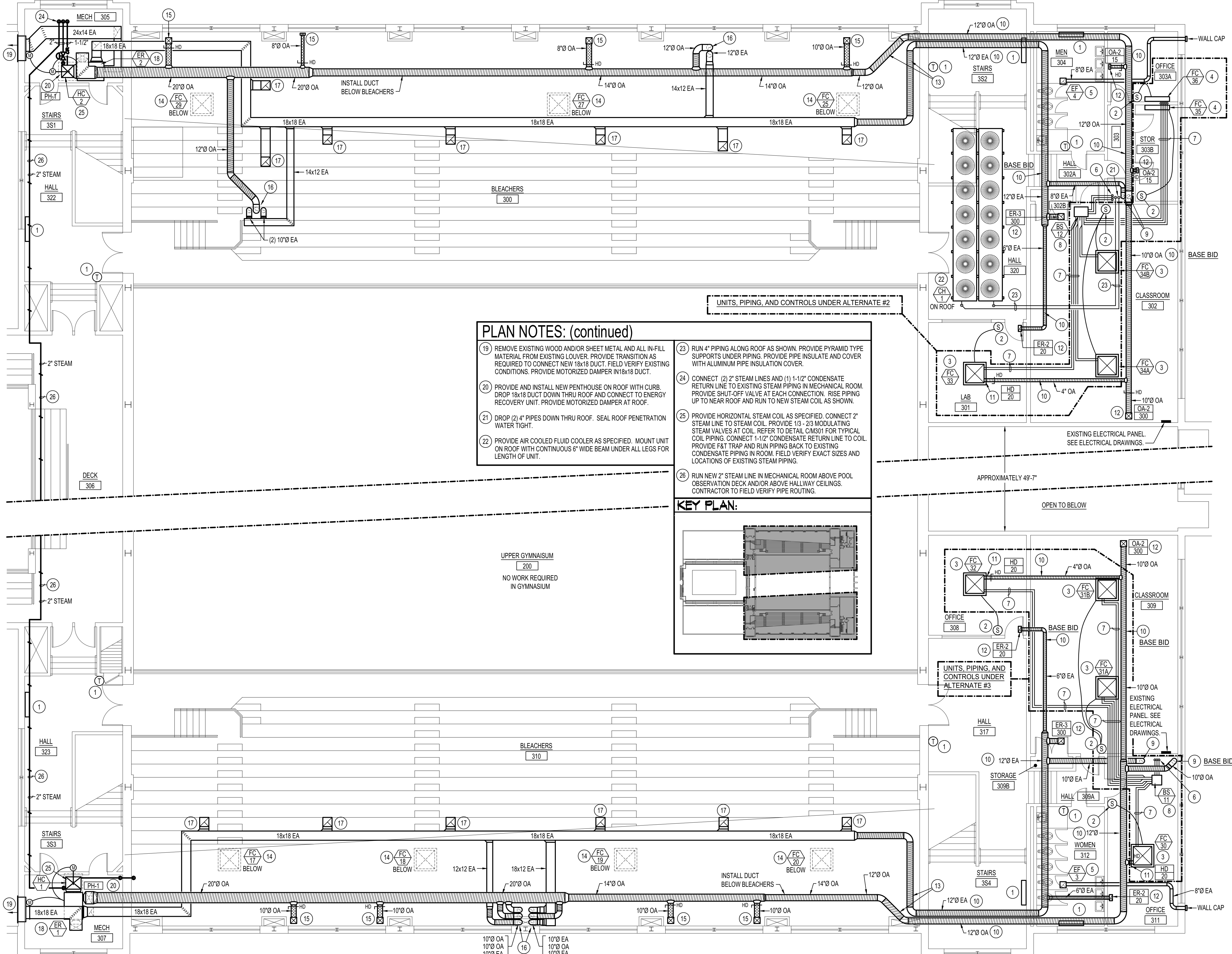
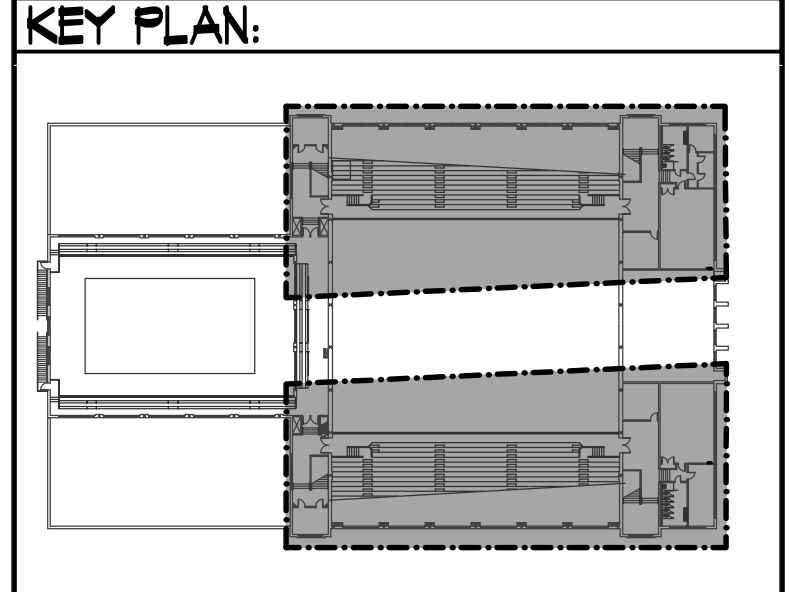


18050-M103.dwg Feb 16, 2021 - 3:54pm



- PLAN NOTES: (continued)**
- 19 REMOVE EXISTING WOOD AND/OR SHEET METAL AND ALL IN-FILL MATERIAL FROM EXISTING LOUVER. PROVIDE TRANSITION AS REQUIRED TO CONNECT NEW 18x18 DUCT. FIELD VERIFY EXISTING CONDITIONS. PROVIDE MOTORIZED DAMPER IN 18x18 DUCT.
 - 20 PROVIDE AND INSTALL NEW PENTHOUSE ON ROOF WITH CURB. DROP 18x18 DUCT DOWN THRU ROOF AND CONNECT TO ENERGY RECOVERY UNIT. PROVIDE MOTORIZED DAMPER AT ROOF.
 - 21 DROP (2) 4" PIPES DOWN THRU ROOF. SEAL ROOF PENETRATION WATER TIGHT.
 - 22 PROVIDE AIR COOLED FLUID COOLER AS SPECIFIED. MOUNT UNIT ON ROOF WITH CONTINUOUS 6" WIDE BEAM UNDER ALL LEGS FOR LENGTH OF UNIT.
 - 23 RUN 4" PIPING ALONG ROOF AS SHOWN. PROVIDE PYRAMID TYPE SUPPORTS UNDER PIPING. PROVIDE PIPE INSULATE AND COVER WITH ALUMINUM PIPE INSULATION COVER.
 - 24 CONNECT (2) 2" STEAM LINES AND (1) 1-1/2" CONDENSATE RETURN LINE TO EXISTING STEAM PIPING IN MECHANICAL ROOM. PROVIDE SHUT-OFF VALVE AT EACH CONNECTION. RISE PIPING UP TO NEAR ROOF AND RUN TO NEW STEAM COIL AS SHOWN.
 - 25 PROVIDE HORIZONTAL STEAM COIL AS SPECIFIED. CONNECT 2" STEAM LINE TO STEAM COIL. PROVIDE 1/3 - 2/3 MODULATING STEAM VALVES AT COIL. REFER TO DETAIL CM301 FOR TYPICAL COIL PIPING. CONNECT 1-1/2" CONDENSATE RETURN LINE TO COIL. PROVIDE F&T TRAP AND RUN PIPING BACK TO EXISTING CONDENSATE PIPING IN ROOM. FIELD VERIFY EXACT SIZES AND LOCATIONS OF EXISTING STEAM PIPING.
 - 26 RUN NEW 2" STEAM LINE IN MECHANICAL ROOM ABOVE POOL OBSERVATION DECK AND/OR ABOVE HALLWAY CEILINGS. CONTRACTOR TO FIELD VERIFY PIPE ROUTING.



UPPER GYMNASIUM
200
NO WORK REQUIRED
IN GYMNASIUM

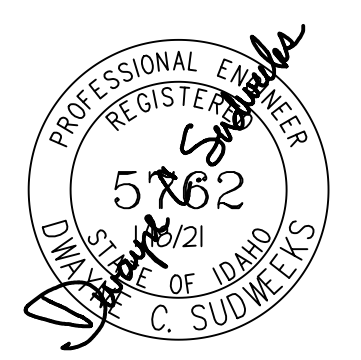
THIRD FLOOR MECHANICAL PLAN
SCALE: 1/8" = 1'-0"



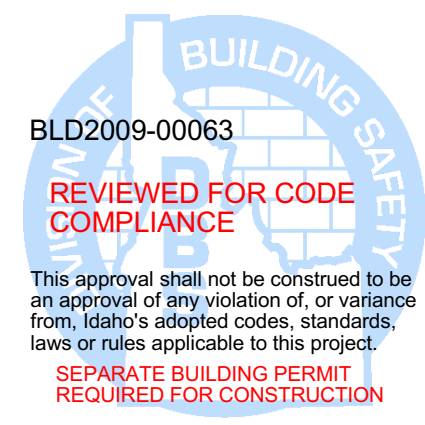
PLAN NOTES:

- 1 EXISTING STEAM UNIT VENTILATOR, UNIT HEATER, AND/OR CONNECTOR TO REMAIN. EXISTING PNEUMATIC THERMOSTAT TO REMAIN. PROTECT EQUIPMENT, PIPING AND CONTROLS DURING CONSTRUCTION AND MAINTAIN CONNECTIONS.
- 2 PROVIDE AND INSTALL NEW DIGITAL (WIRED) CONTROLS ON WALL AND CONNECT TO CORRESPONDING FAN COIL UNIT(S) AS SHOWN.
- 3 PROVIDE AND INSTALL NEW RECESSED CEILING MOUNTED FAN COIL UNIT AS SPECIFIED. COORDINATE ACTUAL LOCATION WITH BUILDING STRUCTURE AND LIGHT FIXTURES. CONNECT NEW UNIT TO NEW WALL MOUNTED CONTROLS.
- 4 PROVIDE AND INSTALL NEW WALL MOUNTED FAN COIL UNIT AS SPECIFIED. MOUNT AS HIGH AS POSSIBLE ON WALL. COORDINATE WITH BUILDING STRUCTURE AND LIGHT FIXTURES.
- 5 PROVIDE AND INSTALL NEW CEILING MOUNTED EXHAUST FAN AS SPECIFIED. RUN 8" DUCT THRU CEILING SPACE TO WALL CAP AS SHOWN. REFER TO DETAIL ON SHEET M301 FOR TYPICAL INSTALLATION AND DUCT CONNECTION.
- 6 REFRIGERANT LINES UP FROM BELOW. (REFER TO SHEET M102.) OFFSET IN CEILING SPACE AS SHOWN TO CONNECT TO BRANCH SELECTOR BOXES. REFER TO ARCHITECTURAL DRAWINGS FOR CHASE WALLS AROUND DUCTWORK AND PIPING.
- 7 REFRIGERANT LINES TO BE RUN IN CEILING SPACE. COORDINATE WITH EXISTING BUILDING STRUCTURE, DUCTWORK, AND OTHER PIPING. CONTRACTOR TO FIELD VERIFY EXISTING CONDITIONS AND MAKE ADJUSTMENTS TO PIPE ROUTES TO AVOID CONFLICTS.
- 8 PROVIDE AND INSTALL BRANCH SELECTOR BOX ABOVE CEILING. CONNECT TO (3) REFRIGERANT LINES FROM HEAT RECOVERY UNIT IN BASEMENT AND TO CORRESPONDING FAN COIL UNITS AS SHOWN. REFER TO MANUFACTURER'S INSTALLATION AND PIPING CONNECTION INSTRUCTIONS.
- 9 DROP OUTSIDE AIR DUCT AND/OR EXHAUST DUCT DOWN IN ROOM OR CHASE TO SECOND FLOOR. DUCT SIZE AS CALLED OUT ON PLAN. REFER TO M102 FOR CONTINUATION OF DUCTWORK BELOW. COORDINATE DUCT LOCATIONS WITH BUILDING STRUCTURE. KEEP AS CLOSE TO WALLS OR IN CORNERS AS POSSIBLE. REFER TO ARCHITECTURAL PLANS FOR CHASE WALLS AROUND DUCTS. PROVIDE 1 HOUR FIRE DAMPER AT UPPER FLOOR PENETRATION IN EACH DUCT. REFER TO DETAIL DM301 FOR TYPICAL INSTALLATION.
- 10 RUN NEW ROUND DUCTWORK ABOVE CEILINGS. COORDINATE WITH EXISTING BUILDING STRUCTURE, OTHER DUCTWORK, AND PIPING.
- 11 CONNECT 4" DUCT OUTSIDE AIR DUCT TO RECESSED CEILING FAN COIL UNIT. PROVIDE BALANCING DAMPER IN DUCT AND BALANCE TO CFM AS INDICATED. IF ALTERNATE IS NOT ACCEPTED, PROVIDE NEW OA-1 GRILLE IN CEILING AND CONNECT TO 4" DUCT ABOVE CEILING UNDER BASE BID CONDITIONS.
- 12 PROVIDE OUTSIDE AIR OR EXHAUST AIR GRILLE AS SPECIFIED. MOUNT GRILLE IN CEILING AND CONNECT TO ROUND DUCT ABOVE. BALANCE TO CFM AS INDICATED.
- 13 RAISE OUTSIDE AIR AND EXHAUST AIR DUCTS UP AS HIGH AS POSSIBLE BELOW BLEACHERS BEFORE CROSSING STAIRWAY. DUCT TO BE ABOVE CEILING OF TOILET ROOMS AND OFFICES. CONTRACTOR TO FIELD VERIFY EXACT DIMENSIONS AND ELEVATIONS OF BLEACHERS AND OFFICE CEILINGS.
- 14 CEILING CASSETTE TO SERVE ROOM BELOW. REFER TO SHEET M102 FOR PLACEMENT OF UNIT IN ROOM.
- 15 DROP OUTSIDE AIR DUCT DOWN AND CONNECT TO CEILING DIFFUSER BELOW. REFER TO SHEET M102 FOR DIFFUSER LOCATIONS AND TO GRILLE. PROVIDE BALANCING DAMPER IN BRANCH DUCT. REFER TO REGISTER SCHEDULE FOR DUCT SIZE REQUIRED AT EACH DIFFUSER.
- 16 DROP OUTSIDE AIR AND/OR EXHAUST AIR DUCT(S) DOWN THRU ROOM ON MAIN LEVEL. REFER TO SHEET M102 FOR CONTINUATION OF DUCTWORK ON LEVEL BELOW AND CONTINUATION OF DUCTWORK DOWN TO FIRST FLOOR.
- 17 REFER TO SHEET M102 FOR NEW EXHAUST GRILLE TO BE MOUNTED IN CEILING OF SECOND FLOOR. CONNECT 18x10 DUCT TO NEW GRILLE. RISE UP AND CONNECT TO NEW 18x18 TRUNK EXHAUST DUCT BELOW BLEACHERS.
- 18 PROVIDE AND INSTALL NEW ENERGY RECOVERY UNIT AS SPECIFIED IN MECHANICAL ROOM. FIELD VERIFY EXISTING CONDITIONS, (SHELVING, PIPING, ETC.) AND ADJUST LOCATION AND/OR ROTATION OF UNIT AS REQUIRED. CONNECT TO OUTSIDE AIR, EXHAUST AIR, FRESH AIR, AND RELIEF AIR DUCTS AS SHOWN.

ORIGINAL DRAWING SIGNED BY: DWAYNE C. SUDWEEKS
DATE ORIGINAL SIGNED: Feb 16, 2021
ORIGINAL ON FILE AT ENGINEERED SYSTEMS ASSOCIATES
1355 EAST CENTER, POCATELLO, IDAHO 83201



Engineered Systems Associates
1355 EAST CENTER
POCATELLO, IDAHO 83201
PHONE: (208) 233-0501
FAX: (208) 233-0529
EMAIL: eso@engsystems.com
ESA JOB NUMBER: 18050



Myers Anderson
Architecture
Interior Design
Landscape Architecture
122 South Main Street • Pocatello, Idaho 83204 • Tel. (208) 232-3744 • Fax (208) 232-3782
927 Main Street, Suite 300 • Evanston, Wyoming 82930 • Tel. (307) 789-0934

**REED GYM HVAC UPGRADE
IDAHO STATE UNIVERSITY
DPW # 19227**

POCATELLO, IDAHO

PROJECT: REED GYM HVAC UPGRADE IDAHO STATE UNIVERSITY DPW # 19227
SHEET TITLE: **THIRD FLOOR MECHANICAL PLAN**

CONTRACTOR SHALL VERIFY ALL DIMENSIONS & CONDITIONS SHOWN OR IMPLIED
DRAWING SCALE APPLIES TO 22" X 34" SHEET SIZE
REVISION: _____ DATE: _____

DRAWN BY: M. JENSEN
CHECKED BY: D. SUDWEEKS
JOB NUMBER: 18467
PROJECT DATE: FEBRUARY 2021
SHEET M103 OF 12